

Parts List

1	Driver / left running board
1	Passenger / right running board
2	Mounting bracket, front
2	Mounting bracket, middle
2	Mounting bracket, rear
2	Hanger bracket, front
2	Hanger bracket, middle
2	Hanger bracket, rear
6	Hex bolt, 8mm
6	Flat washer, 8mm
6	Lock washer, 8mm
6	Handle nut, 8mm
2	T-bolt, 10mm
6	Hex bolt, 10mm
14	Flat washer, 10mm
8	Lock washer, 10mm
8	Hex nut, 10mm
2	Bolt retainer, plastic, 10mm

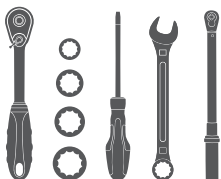
Additional Hardware*

12	Hex bolt, 8mm
12	Flat washer, 8mm
12	Lock washer, 8mm
12	Hex nut, 8mm

* Running boards are supplied with additional hardware. Quantities listed are in addition to the standard supplied hardware.

Tools Required

Ratchet	Socket, 10mm
Torque wrench	Socket, 13mm
Flathead screwdriver	Socket, 17mm
Wrench, 17mm	Socket, 18mm



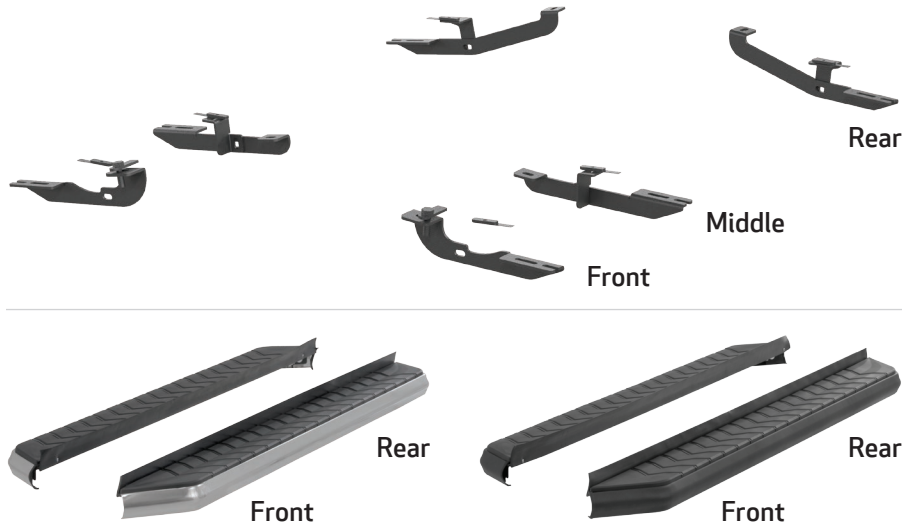
Level of Difficulty

Easy



Scan for helpful install tips

Product Image



Notes and Maintenance

- Before you begin installation, read all instructions thoroughly.
- Proper tools will improve the quality of installation and reduce the time required.
- For stainless steel, polish may be used to clear small scratches and scuffs on the finish. Mild soap may be used also to clean the product.
- For black finishes, mild soap may be used to clean the product.

Step 1

Starting on the driver side, locate the three mounting locations underneath the vehicle.

Note: Each bracket is specific to a mounting location and is stamped accordingly.



Step 2

Locate the fasteners along the side of the vehicle and rocker panel and remove them.



Step 3

Remove the factory hex bolts on the front and rear end of the rocker panel.

Remove the plastic trim along the edge of the vehicle.



Step 4

Locate the front hanger bracket mounting point and remove the tape plug. Insert an 8mm handle nut into the opening.



Step 5

Place the front hanger bracket onto the vehicle and secure with an 8mm flat washer, 8mm lock washer and 8mm hex bolt.

Snug the hardware, but do not fully tighten.

Repeat this process to install the middle and rear hanger brackets.

With the hanger brackets installed, reinstall the plastic trim.



Step 6

Remove the factory nut. Place the front mounting bracket onto the vehicle and secure with the removed factory hardware.

Secure the front mounting bracket to the hanger bracket by inserting a 10mm hex bolt and 10mm flat washer through the outside of the hanger bracket and securing with a 10mm flat washer, 10mm lock washer and 10mm hex nut on the inside of the bracket.

Snug the hardware, but do not fully tighten.



Step 7

Locate the middle mounting point and remove the factory hex bolt.

Place the middle driver-side bracket onto the vehicle and secure with the previously removed factory hex bolt.

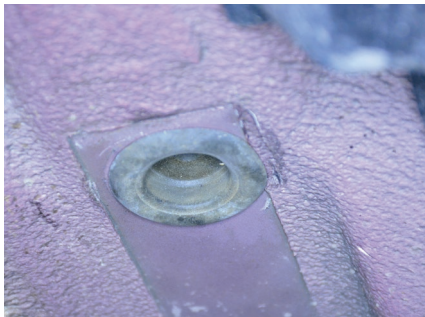
Secure the middle mounting bracket to the hanger bracket by inserting a 10mm hex bolt and 10mm flat washer through the outside of the hanger bracket and securing with a 10mm flat washer, 10mm lock washer and 10mm hex nut on the inside of the bracket.

Snug the hardware, but do not fully tighten.



Step 8

Locate and remove the rear hole plug. Insert an 10mm T-bolt plate into the opening. Slide a plastic bolt retainer over the thread of the bolt to hold the bolt in place.



Step 9

Place the rear driver-side bracket onto the vehicle and secure with a 10mm flat washer, 10mm lock washer and 10mm hex nut.

Secure the rear mounting bracket to the hanger bracket by inserting a 10mm hex bolt and 10mm flat washer through the outside of the hanger bracket and securing with a 10mm flat washer, 10mm lock washer and 10mm hex nut on the inside of the bracket.



Snug the hardware, but do not fully tighten.

Step 10

Remove the 8mm nuts, 8mm lock washers and 8mm flat washers from the running board.

Place the running board onto the brackets and align the 8mm bolts with the slots in the brackets on the vehicle.



Step 11

Attach the running board to the brackets using six 8mm bolts, lock washers, flat washers and nuts.

Snug the hardware, but do not fully tighten.



Step 12

Adjust and level the running board, centering it between the front and rear wheel wells.

With the running board in position, it is recommended to tighten all brackets to the vehicle first, followed by the running board connections.



Step 13

Repeat steps 1 through 12 on the passenger side of the vehicle.

Congratulations on the installation of your brand new ARIES AeroTread™ running boards.

With the running boards installed, periodic inspections should be performed to ensure all mounting hardware remains tight.

To protect your investment, see the 'Notes and Maintenance' section on the first page of this instruction manual.

