

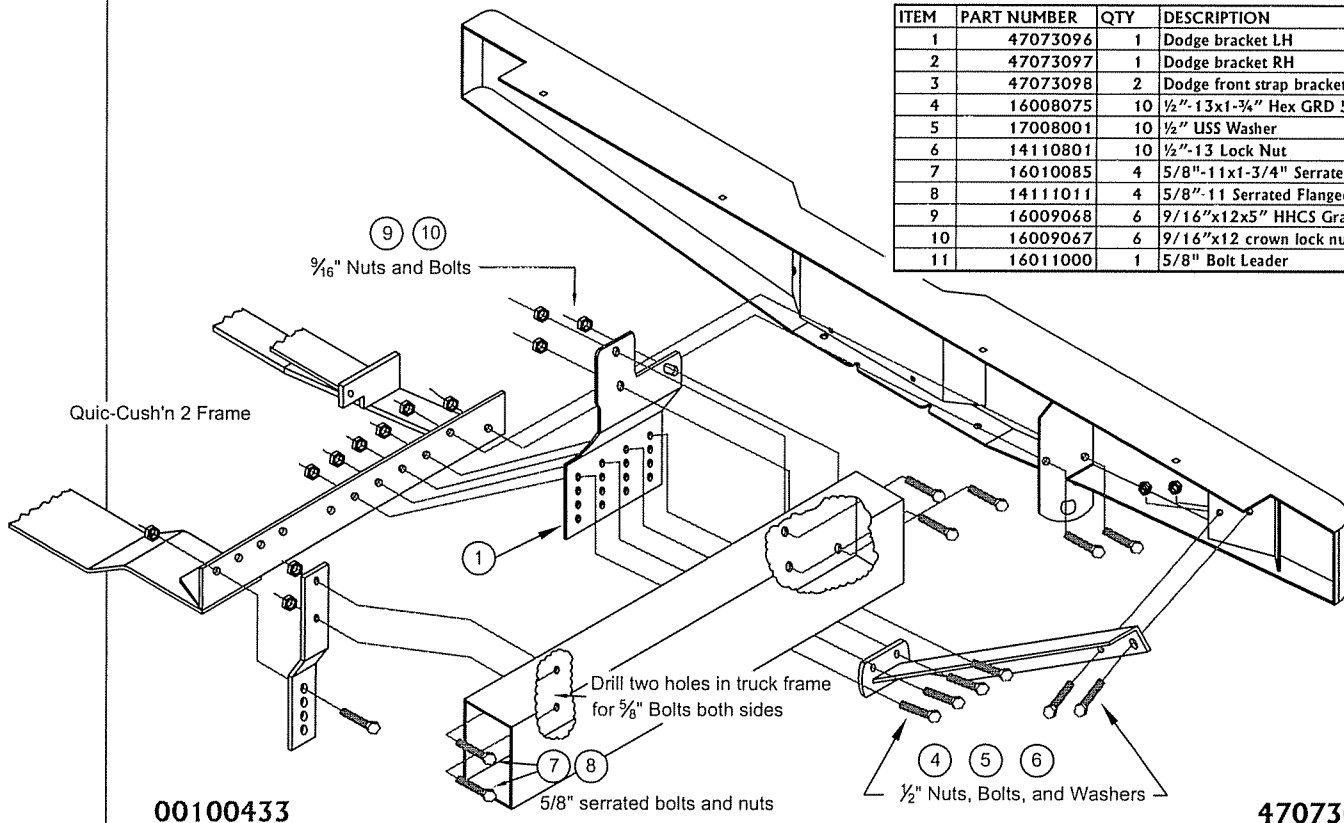
Quic-n Cushion Towing System 2002-2009 Dodge 2500/3500

Assembly Instructions

1. Remove spare tire and tighten tire carrier to prevent vibration noise.
2. Remove existing bolts (3) each side. Nuts may be tack welded. If so, knock off and reuse with bolts.
3. If applicable, remove factory hitch receiver. Depending on model, hitch receiver may be attached by bolts and welds and must be cut off. The cross tube behind the bumper is part of the bumper and should stay attached.
4. Attach mounting brackets (#1, 2) to the truck frame using $\frac{9}{16}$ " nuts and bolts (#9, 10). Raise hitch frame to position and loosely install $\frac{1}{2}$ " bolts (#4) through hitch frame and brackets. Bumper braces from hitch should bolt to middle of brackets.
5. Loosely attach front straps (#3) to hitch frame with $\frac{1}{2}$ " hardware (#4, 5, 6). Mark location for the front strap brackets on the truck frame. These holes must be drilled for installation of the front straps.
6. After marking and drilling of holes for strap brackets, $\frac{5}{8}$ " flanged serrated bolts (#7) must be fishwired through frame using nearby access hole and $\frac{5}{8}$ " bolt leader (#11). Align $\frac{5}{8}$ " bolts through frame, locking with nuts (#8).
7. Slide DMI bumper into place by inserting bumper through towbar. Secure in place with $\frac{1}{2}$ " nuts and bolts (provided in bumper kit) through braces and front of hitch.
8. **IMPORTANT:** Torque to specification
 - a. $\frac{1}{2}$ " diameter grade 5 bolts: 75 ft lbs
 - b. $\frac{9}{16}$ " diameter grade 5 bolts: 110 ft lbs
 - c. $\frac{5}{8}$ " diameter grade 5 bolts: 150 ft lbs
8. **IMPORTANT:** when complete check all clearances between truck components and Quic'n Easy receiver hitch assembly. A minimum of 2- $\frac{1}{4}$ " between the spring casting and above obstructions is required to allow proper and safe operation.
9. **IMPORTANT:** check hitch and mounting kit periodically for loose fasteners or weakened welds and structural members.

****This mount is designed for a Class V DMI hitch with a gross load capacity of 14,000 lbs. when used as a weight-carrying hitch. However, the maximum towing capacity is limited to the lowest capacity of any component in the towing system. DO NOT EXCEED TRUCK MANUFACTURER'S TOWING CAPACITY.****

ITEM	PART NUMBER	QTY	DESCRIPTION
1	47073096	1	Dodge bracket LH
2	47073097	1	Dodge bracket RH
3	47073098	2	Dodge front strap bracket
4	16008075	10	$\frac{1}{2}$ "-13x1- $\frac{3}{4}$ " Hex GRD 5
5	17008001	10	$\frac{1}{2}$ " USS Washer
6	14110801	10	$\frac{1}{2}$ "-13 Lock Nut
7	16010085	4	$\frac{5}{8}$ "-11x1- $\frac{3}{4}$ " Serrated Flanged Bolt Grd 5
8	14111011	4	$\frac{5}{8}$ "-11 Serrated Flanged Nut
9	16009068	6	$\frac{9}{16}$ "x12x5" HHCS Grade 5
10	16009067	6	$\frac{9}{16}$ "x12 crown lock nut
11	16011000	1	$\frac{5}{8}$ " Bolt Leader



00100433

47073095

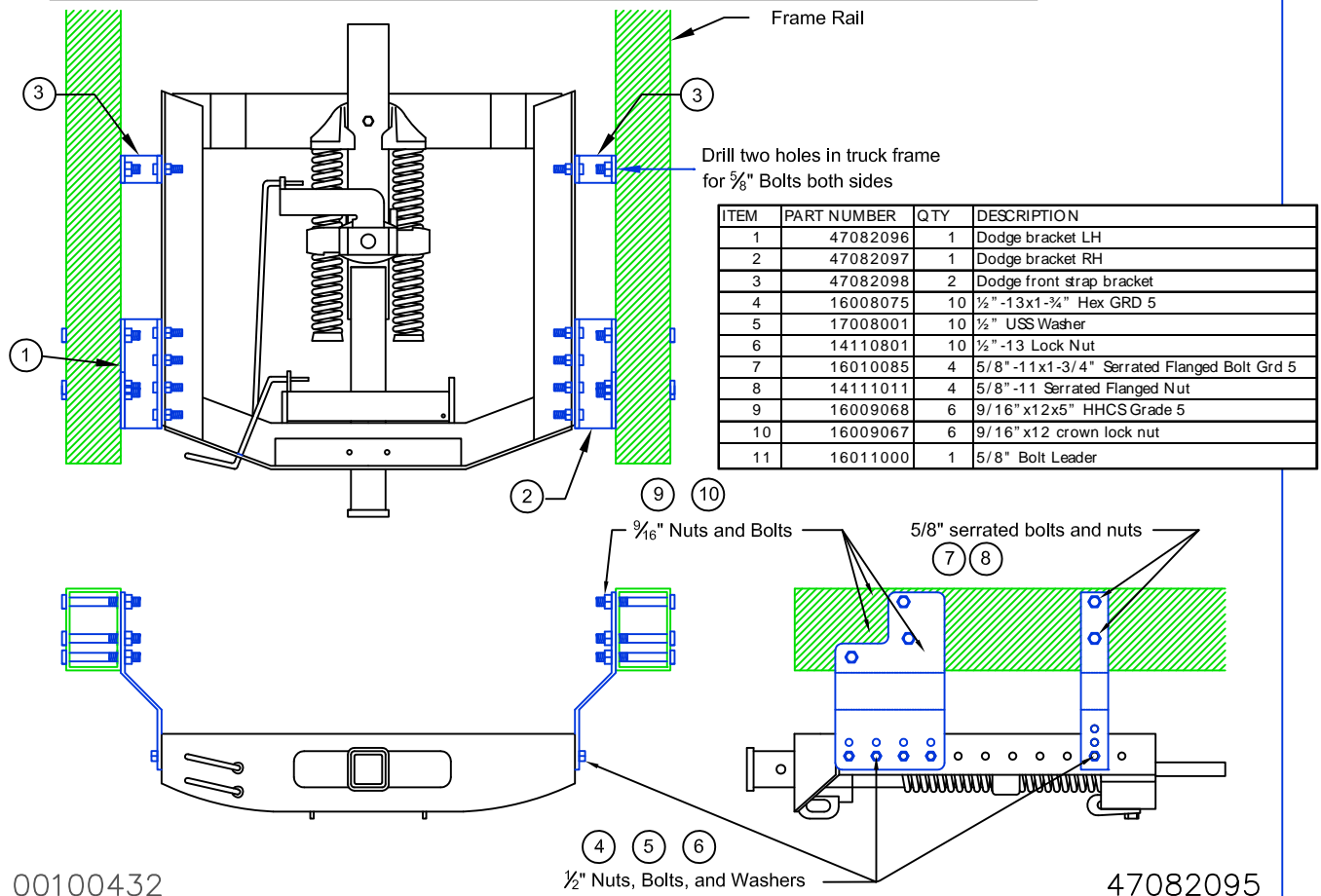
Limited one year warranty by United Truck Parts. Visit www.unitedtruckparts.com for more details.

Quic'n Easy 2002-2013 Dodge 2500/3500 2002-2008 Dodge 1500

Assembly Instructions

1. Remove spare tire and tighten tire carrier to prevent vibration noise.
2. Remove existing bolts (3) each side. Nuts may be tack welded. If so, knock off and reuse with bolts.
3. If applicable, remove factory hitch receiver. Depending on model, hitch receiver may be attached by bolts and welds and must be cut off. The cross tube behind the bumper is part of the bumper and should stay attached.
4. Attach mounting brackets (#1, 2) to the truck frame using $\frac{9}{16}$ " nuts and bolts (#9, 10). Raise hitch frame to position and loosely install $\frac{1}{2}$ " bolts (#4) through frame and brackets. Snug to hold in position with bolts and washers (#5, 6).
5. Loosely attach front straps (#3) to hitch frame with $\frac{1}{2}$ " hardware (#4, 5, 6). Mark location for the front strap brackets on the truck frame. These holes must be drilled for installation of the front straps.
6. After marking and drilling of holes for strap brackets, $\frac{5}{8}$ " flanged serrated bolts (#7) must be fishwired through frame using nearby access hole. Align $\frac{5}{8}$ " bolts through frame, locking with nuts (#8).
7. IMPORTANT: Torque to specification
 - a. $\frac{1}{2}$ " diameter grade 5 bolts: 75 ft lbs
 - b. $\frac{9}{16}$ " diameter grade 5 bolts: 110 ft lbs
 - c. $\frac{5}{8}$ " diameter grade 5 bolts: 150 ft lbs
8. IMPORTANT: when complete check all clearances between truck components and Quic'n Easy receiver hitch assembly. A minimum of 2- $\frac{1}{4}$ " between the spring casting and above obstructions is required to allow proper and safe operation.
9. IMPORTANT: check hitch and mounting kit periodically for loose fasteners or weakened welds and structural members.

****This mount is designed for a Class IV DMI hitch with a gross load capacity of 12,000 lbs. when used as a weight-carrying hitch. However, the maximum towing capacity is limited to the lowest capacity of any component in the towing system. DO NOT EXCEED TRUCK MANUFACTURER'S TOWING CAPACITY.****



00100432

$\frac{1}{2}$ " Nuts, Bolts, and Washers

47082095