



INSTALLATION MANUAL

13633

Level of Difficulty

Easy

Installation difficulty levels are based on time and effort involved and may vary depending on the installer level of expertise, condition of the vehicle and proper tools and equipment.

Weight Carrying Capacity

Gross trailer weight (GTW)	3,500 lbs.
Tongue weight (TW)	525 lbs.

Parts List

Item	Qty	Description
1	1	Trailer hitch
2	4	Carriage bolt, 1/2" - 13 x 1-1/2
3	4	Serrated-flange nut, 1/2" - 13
4	4	Square-hole spacer, .250" x 1.00" x 3.00"
5	2	Round-hole spacer, .250" x 1.50" x 2.00"

Tools Required

Ratchet	Torque wrench
Socket, 3/4"	Fishwire, 1/2" (qty 4)
Die grinder	--

* For a tools reference guide visit curtmfg.com/trailer-hitch-installation

Product Registration and Warranty

CURT stands behind our products with industry-leading warranties. To get copies of the product warranties, register your purchase or provide feedback, visit: warranty.curtgroup.com/surveys

⚠ WARNING

Never exceed the vehicle manufacturer's recommended towing capacity.

⚠ CAUTION

Safety glasses should be worn at all times while installing this product

Product Photo



NOTICE

Visit www.curtmfg.com for a full-color copy of this instruction manual, as well as helpful videos, guides and much more!

Before you begin installation, read all instructions thoroughly.

Proper tools will improve the quality of installation and reduce the time required.

This installation requires:

- Fishwiring to install hardware
- Drilling and hole enlargement

Periodic inspection of the trailer hitch should be performed to ensure all mounting hardware remains tight and structural components are secure.

To help prevent damage to the product or vehicle, refer to the specified torque specifications when securing hardware during the installation process.

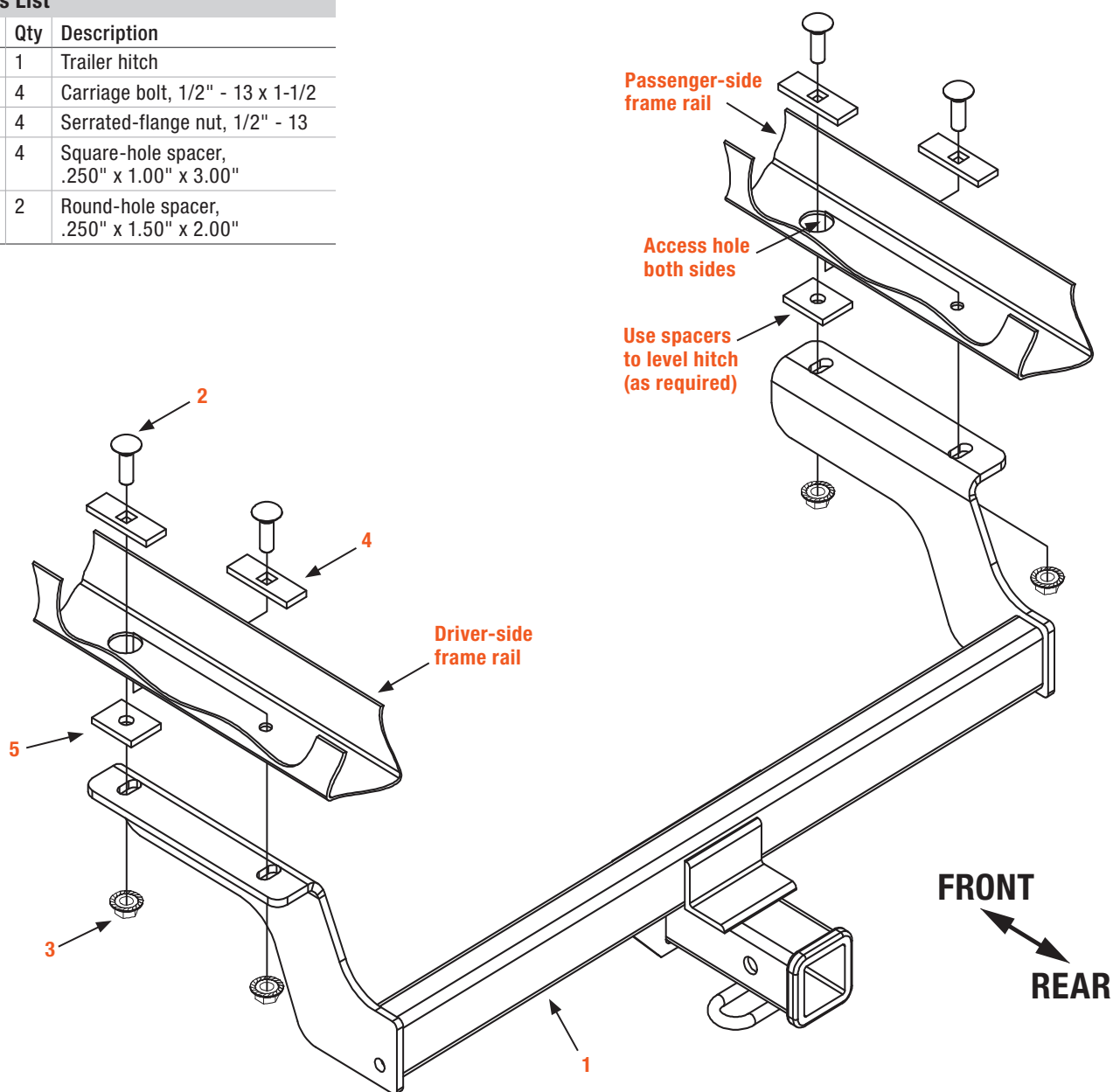
SAFETY INSTRUCTIONS

Safety glasses should be worn at all times while installing this product.

ASSEMBLY

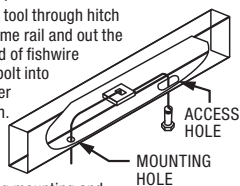
Parts List

Item	Qty	Description
1	1	Trailer hitch
2	4	Carriage bolt, 1/2" - 13 x 1-1/2
3	4	Serrated-flange nut, 1/2" - 13
4	4	Square-hole spacer, .250" x 1.00" x 3.00"
5	2	Round-hole spacer, .250" x 1.50" x 2.00"



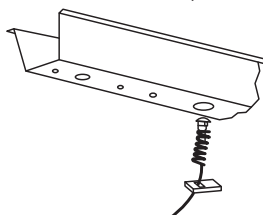
FISHWIRE TECHNIQUE

Insert coiled end of fishwire tool through hitch mounting hole in vehicle frame rail and out the access hole. Pass coiled end of fishwire through spacer and thread bolt into coil. Kink wire to keep spacer separate from bolt as shown. Pull fishwire, spacer and bolt through frame and out mounting hole. Use fishwire to guide hitch during mounting and prevent loss of bolt or spacer inside frame rail.

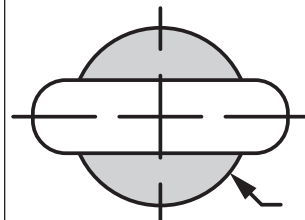


REVERSE PULL FISHWIRE TECHNIQUE

Attach the fishwire to the carriage bolt and slide the spacer onto the fishwire. Push the bolt through the hole followed by the spacer, as shown. Pull the bolt back into position, protruding from the frame.



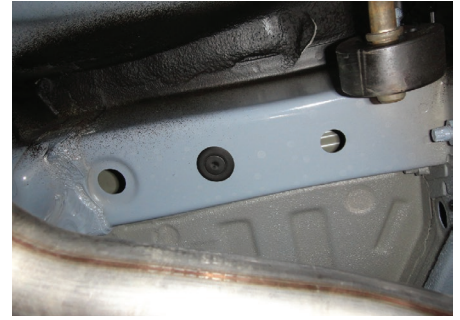
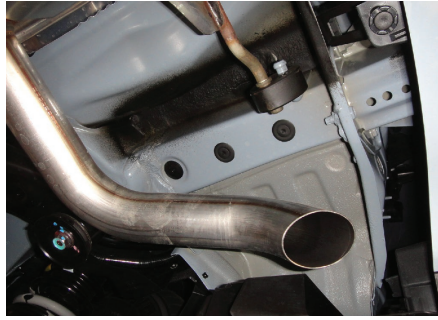
HOLE ENLARGEMENT



Step 1

Remove two (2) rubber plugs from each frame rail and return to the vehicle owner.

Note: Leave the center plugs installed in the frame.



Step 2

Enlarge access holes as necessary.

Fishwire 1/2" carriage bolts (#2) and square hole spacers (#4) into rear most position.

Reverse fishwire the remaining 1/2" carriage bolts and square hole spacers into the access hole.

Leave fishwires attached.



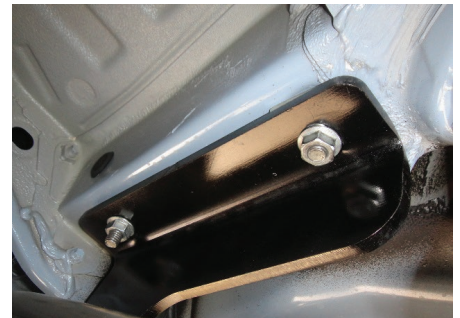
Step 3

Raise the hitch to the frame by feeding the fishwire through the hitch mounting holes and align the mounting holes with the bolts.

Use the round-hole spacers (#5) to level the hitch as necessary.

Remove fishwires and loosely install 1/2" flange nuts (#3).

NOTE: Be careful not to push the bolts into the frame.



Step 4

Torque all 1/2" fasteners to 110 ft-lb.



Final Installed Image



TOWING BASICS & SAFETY INFORMATION

For information on safely towing your trailer, visit curtmfg.com/understanding-towing.