



INSTALLATION MANUAL

13639

Level of Difficulty

Moderate

Installation difficulty levels are based on time and effort involved and may vary depending on the installer level of expertise, condition of the vehicle and proper tools and equipment.

Weight Carrying Capacity

Gross trailer weight (GTW)	2,000 lbs.
Tongue weight (TW)	200 lbs.

Parts List

Item	Qty	Description
1	1	Trailer hitch
2	4	Carriage bolt, 7/16" - 14 x 1.5", grade 8
3	4	Spacer, .25" x .88" x 2.25"
4	4	Serrated-flange nut, 7/16" - 14
5	4	Fishwire, 7/16"

Tools Required

Ratchet	Torque wrench
Socket, 11/16"	Rotary tool
Cut-off wheel	

* For a tools reference guide visit curtmfg.com/trailer-hitch-installation

⚠ WARNING

Never exceed the vehicle manufacturer's recommended towing capacity.

Product Photo



NOTICE

Visit www.curtmfg.com for a full-color copy of this instruction manual, as well as helpful videos, guides and much more!

Before you begin installation, read all instructions thoroughly.

Proper tools will improve the quality of installation and reduce the time required.

This installation requires:

- Rear bumper cover trimming required
- No drilling required
- Fishwiring to install hardware

Periodic inspection of the trailer hitch should be performed to ensure all mounting hardware remains tight and structural components are secure.

To help prevent damage to the product or vehicle, refer to the specified torque specifications when securing hardware during the installation process.

SAFETY INSTRUCTIONS

Safety glasses should be worn at all times while installing this product.

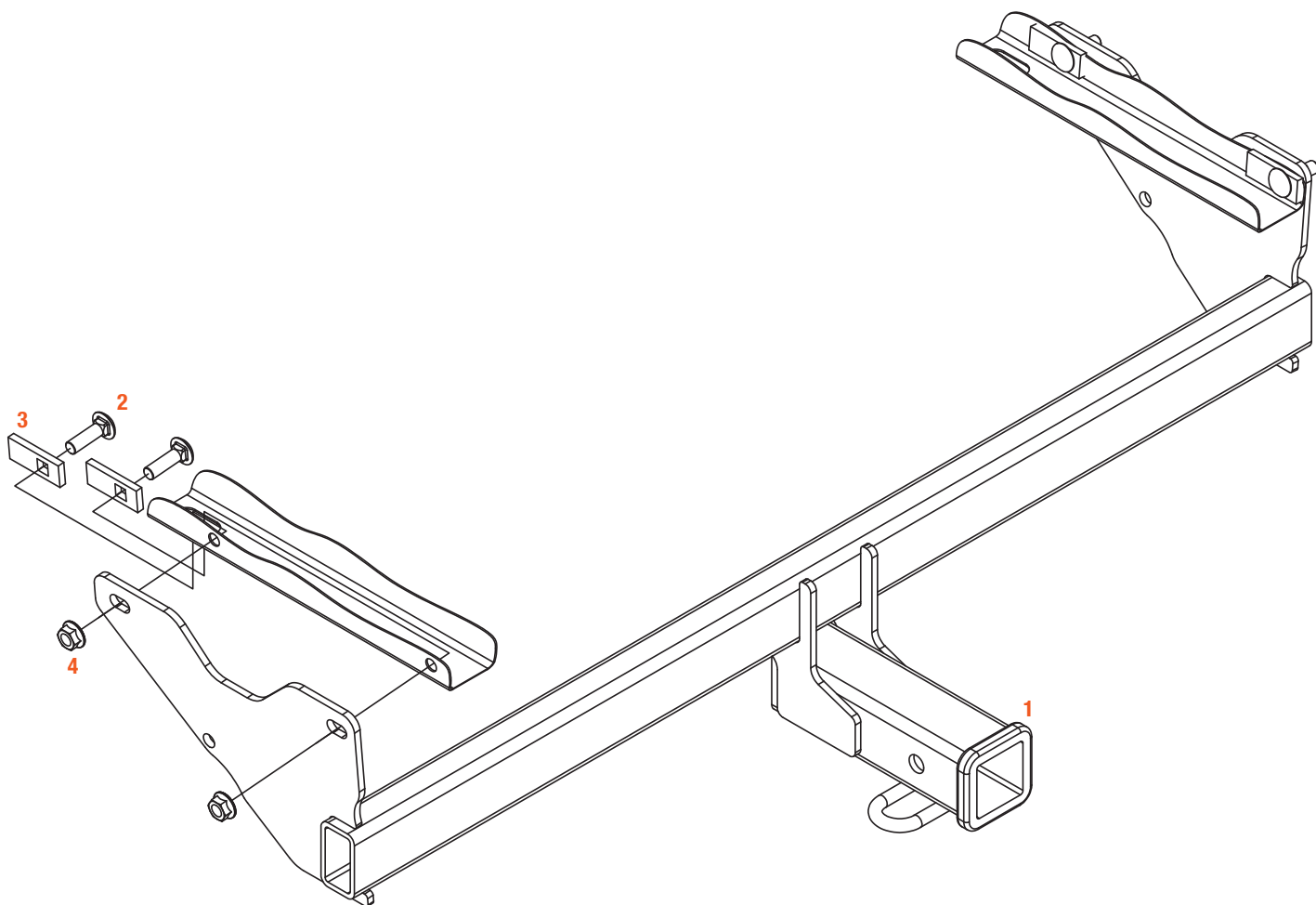
Product Registration and Warranty

CURT stands behind our products with industry-leading warranties. To get copies of the product warranties, register your purchase or provide feedback, visit: warranty.curtgroup.com/surveys

ASSEMBLY

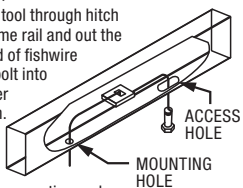
Parts List

Item	Qty	Description
1	1	Trailer hitch
2	4	Carriage bolt, 7/16" - 14 x 1.5", grade 8
3	4	Spacer, .25" x .88" x 2.25"
4	4	Serrated-flange nut, 7/16" - 14
5	4	Fishwire, 7/16" (Not Shown)



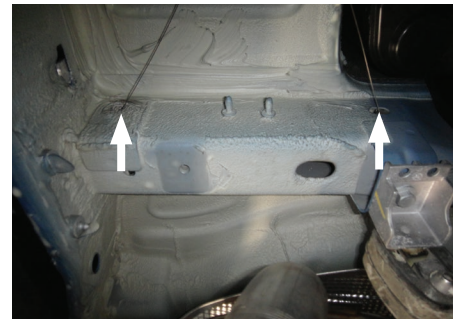
FISHWIRE TECHNIQUE

Insert coiled end of fishwire tool through hitch mounting hole in vehicle frame rail and out the access hole. Pass coiled end of fishwire through spacer and thread bolt into coil. Kink wire to keep spacer separate from bolt as shown. Pull fishwire, spacer and bolt through frame and out mounting hole. Use fishwire to guide hitch during mounting and prevent loss of bolt or spacer inside frame rail.



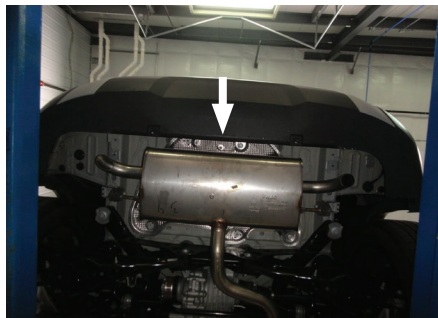
Step 1

Use the 7/16" fishwire (#5) to pull the carriage bolt (#2) and CM-SP2 spacer (#3) through access hole in bottom of frame rails and leave in frame.



Step 2

Trim the center of the bumper cover using the end of the texture as a guide and the diagram for reference.

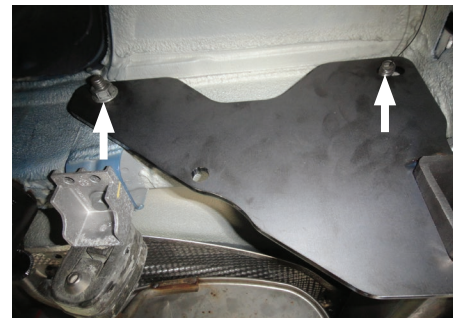
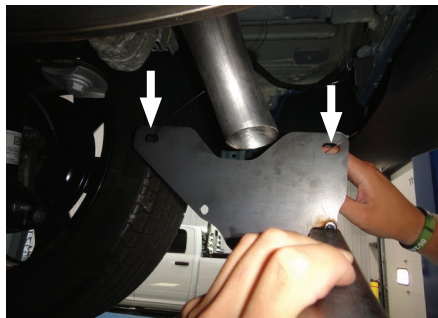


Step 3

Raise hitch into position feeding fishwires through mounting holes in hitch.

Pull hardware out of frame and secure hitch with 7/16" nuts (#4).

Torque all 7/16" hardware to 59 ft-lbs.



Final Installed Image



TOWING BASICS & SAFETY INFORMATION

For information on safely towing your trailer, visit curtmfg.com/understanding-towing.