

INSTALLATION MANUAL

31094

Level of Difficulty

Moderate

Installation difficulty levels are based on time and effort involved and may vary depending on the installer level of expertise, condition of the vehicle and proper tools and equipment.

Weight Carrying Capacity

Gross trailer weight (GTW)	3,500 lbs.
Tongue weight (TW)	350 lbs.
Straight line pull	9000 lbs.

Parts List

Item	Qty	Description
1	1	Trailer hitch
2	2	Carriage bolt, 1/2"-13 x 1-1/2", grade 8
3	2	Serrated-flange nut, 1/2"-13
4	2	Square-hole spacer, .250" x 1.00" x 2.50"

Tools Required

Ratchet	Socket, 10mm
Socket, 12mm	Socket, 17mm
Socket, 3/4"	Socket extension, 6"
Torque wrench	Trim panel pry tool
Cut-off wheel	Fishwire, 1/2" (includes 2 qty)

* For a tools reference guide visit curtmfg.com/trailer-hitch-installation

⚠ WARNING

Never exceed the vehicle manufacturer's recommended towing capacity.

Product Photo



NOTICE

Visit www.curtmfg.com for a full-color copy of this instruction manual, as well as helpful videos, guides and much more!

Before you begin installation, read all instructions thoroughly.

Proper tools will improve the quality of installation and reduce the time required.

This installation requires:

- Part Removal
- Trimming of the front air dam
- Use of existing weldnuts
- Fishwiring to install hardware

Periodic inspection of the trailer hitch should be performed to ensure all mounting hardware remains tight and structural components are secure.

To help prevent damage to the product or vehicle, refer to the specified torque specifications when securing hardware during the installation process.

SAFETY INSTRUCTIONS

Safety glasses should be worn at all times while installing this product.

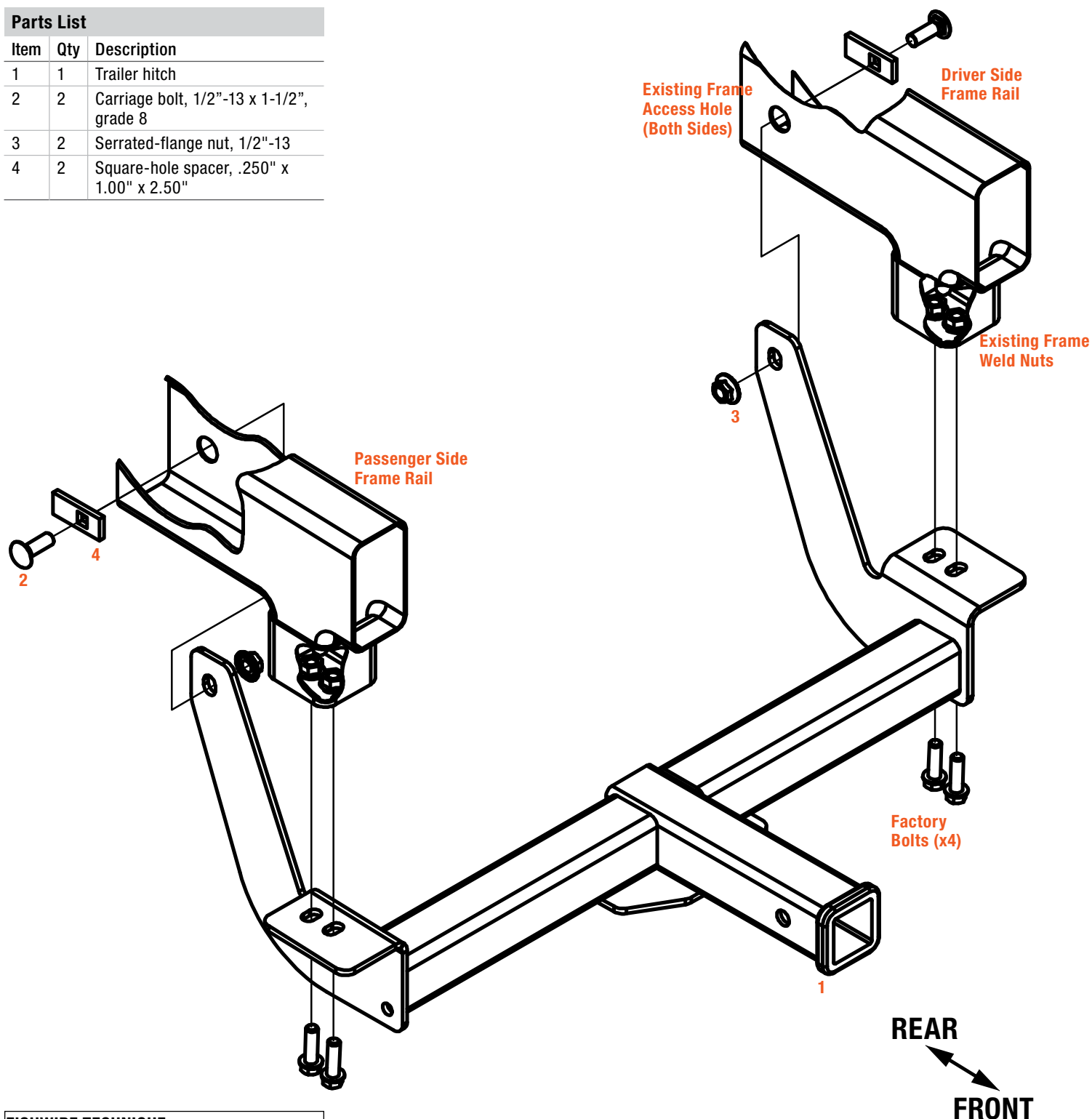
Product Registration and Warranty

CURT stands behind our products with industry-leading warranties. To get copies of the product warranties, register your purchase or provide feedback, visit: warranty.curtgroup.com/surveys

ASSEMBLY

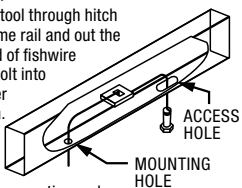
Parts List

Item	Qty	Description
1	1	Trailer hitch
2	2	Carriage bolt, 1/2"-13 x 1-1/2", grade 8
3	2	Serrated-flange nut, 1/2"-13
4	2	Square-hole spacer, .250" x 1.00" x 2.50"



FISHWIRE TECHNIQUE

Insert coiled end of fishwire tool through hitch mounting hole in vehicle frame rail and out the access hole. Pass coiled end of fishwire through spacer and thread bolt into coil. Kink wire to keep spacer separate from bolt as shown. Pull fishwire, spacer and bolt through frame and out mounting hole. Use fishwire to guide hitch during mounting and prevent loss of bolt or spacer inside frame rail.

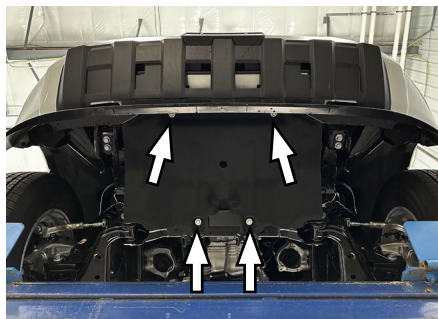


Step 1

For air dam equipped models: Temporarily remove the plastic front underbody panel by removing the four (4) bolts using a 12mm socket.

For skid plate equipped models: Remove the metal skid plate by removing the six (6) bolts using a 12mm socket.

Return the skid plate and hardware to the customer.



Step 2

Remove both tow loops by removing two (2) bolts on each side using a 17mm socket.

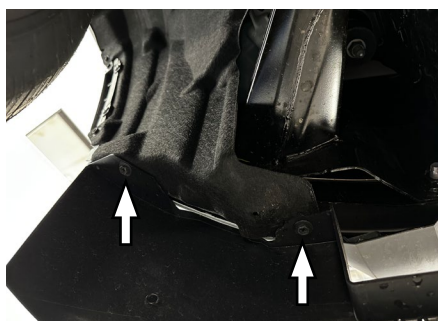
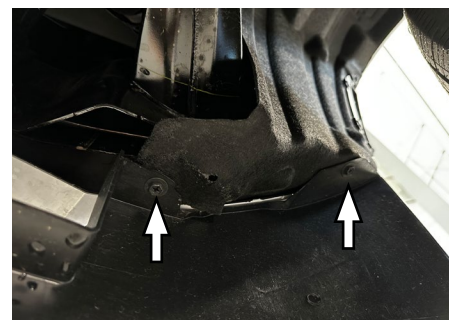
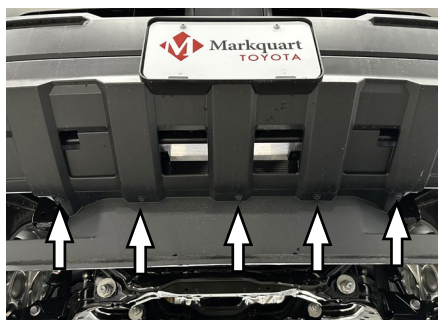
Save the bolts for hitch installation.



Step 3

Using a 10mm socket, remove the nine (9) bolts securing the lower air dam.

Set aside for trimming and reinstallation.



Step 4

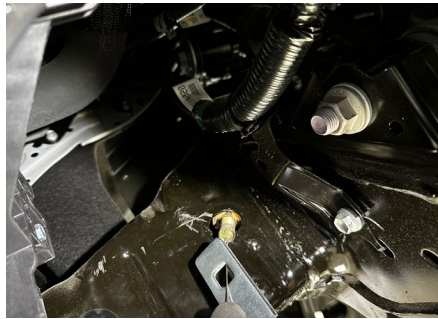
Using a suitable pry tool, remove the access hole plug from the inner frame rail on both sides.



Step 5

Reverse fishwire one 1/2" carriage bolt (#2) and square hole spacer (#4) through the access hole on each frame rail.

Note: Do not pull the carriage bolts through the frame rail holes in this step.



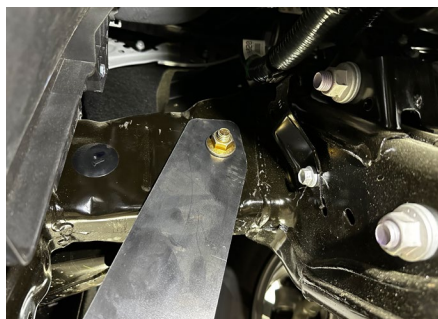
Step 6

Feed the fishwires through the rearmost holes in the hitch on both sides.

Raise the hitch into position and pull the 1/2" carriage bolts (#2) through the mounting holes on the hitch.

Remove the fishwires and loosely secure with 1/2" serrated-flange nuts (#3).

Note: Be careful not to push the hardware into the frame when removing the fishwire. Secure each nut after removing the fishwire one bolt at a time.



Step 7

Loosely install the four (4) factory M12 bolts to secure the hitch to the frame rails.



Step 8

Using a 3/4" socket, torque all 1/2" hardware to 90 ft-lbs.

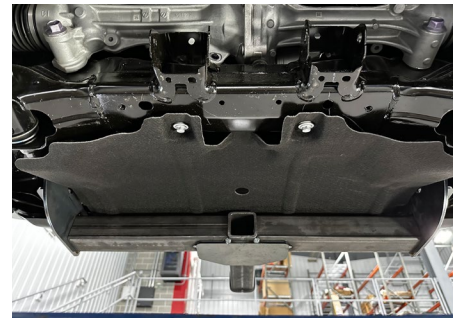
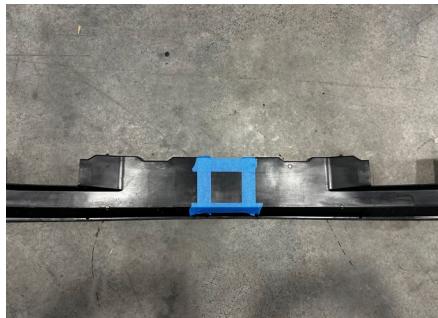
Using a 17mm socket, torque all M12 hardware to 76 ft-lbs.



Step 9

For air dam equipped models: With a cut off wheel, trim the air dam using the diagram shown as a guide.

Reinstall the air dam and plastic underbody panel.



Final Installed Image



TOWING BASICS & SAFETY INFORMATION

For information on safely towing your trailer, visit curtmfg.com/understanding-towing.