

# INSTALLATION MANUAL

## Level of Difficulty

Moderate

Installation difficulty levels are based on time and effort involved and may vary depending on the installer level of expertise, condition of the vehicle and proper tools and equipment.

## Electrical Ratings

Signal circuits	5.0-amps per side
Tail / Running Circuits	7.5-amps total

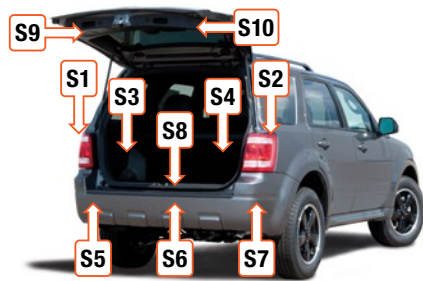
Check vehicle owner's manual or contact the vehicle manufacturer for more information.

## Wiring Location(s)

S3 and S4

## Wiring Location Guide\* for SUVs and Vans (S)

S1	Behind driver side taillight housing
S2	Behind passenger side taillight housing
S3	Behind driver side rear access panel
S4	Behind passenger side rear access panel
S5	Behind driver side rear bumper
S6	Behind center of rear bumper
S7	Behind passenger side rear bumper
S8	Under rear floor panel
S9	Behind driver side rear access panel
S10	Behind passenger side rear access panel



\* Representative vehicle shown

## Tools Required

Torx bit, T-20	Utility knife
Wire cutter	Panel trim remove tool
Wire stripper	
Wire crimper	--

## ⚠ WARNING

Do not exceed product rating or tow vehicle lamp load rating, whichever is lower.

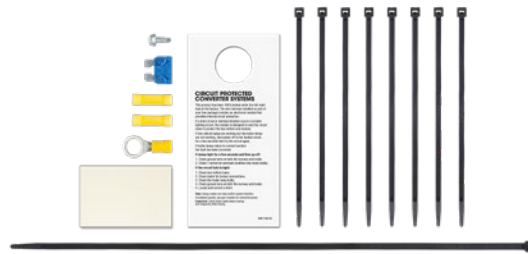
Be sure not to lay tools across the positive (typically noted with red covers or a red '+' symbol). This can cause a ground to short causing sparks and / or electrical shocks.

The battery connection must be fuse-protected, 15-amp max. Exceeding the product rating can cause loss of warranty, overheating and potential fire.

## Product Photo



## Hardware Photo



## NOTICE

Before you begin installation, read all instructions thoroughly.

Proper tools will improve the quality of installation and reduce the time required.

All steps must be followed to ensure the product will function properly. Once installed, test for proper function by using a test light or connecting a properly wired trailer.

## Maintenance

Periodic inspection of all wires and connections should be performed to ensure there is no visible damage or loose connections.

### Step 1

Locate the vehicle's battery in the engine compartment on the driver side and disconnect the negative battery terminal. Be sure to fasten this wire down and away from the battery while completing the installation process.



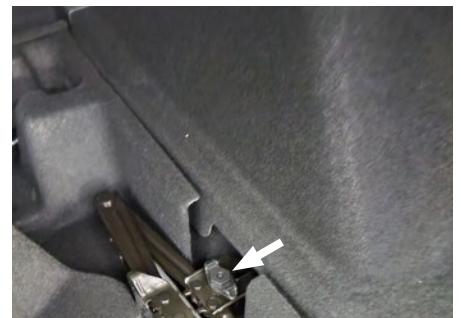
### Step 2

Open the rear hatch and remove the floor coverings to expose the spare tire. Using the trim panel removal tool, unfasten the hatch threshold panel from the rear of the vehicle and lift it straight up.



### Step 3

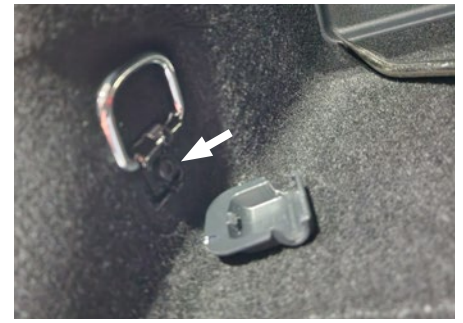
Unscrew the hold-downs securing the spare tire and jack from the rear of the vehicle and remove them. Locate the two (2) hook-and-loop carpet trim pieces on the rear of the second row of seating remove the liner below the spare tire and jack from the vehicle.



#### Step 4

Locate the cargo hold-down loop on the driver side of the trunk area. Using the trim panel tool, remove the plastic trim from the loop. Using a T-20 Torx bit, remove the cargo hold-down.

Repeat to remove the cargo hold-down loop on the other side of the trunk.



#### Step 5

Using the panel trim removal tool, loosen the side wall trim on the driver side of the trunk area to gain access to the inside of the hatch sidewall. Repeat on the driver side.

Locate and disconnect the taillight housing on the driver side of the vehicle, taking care not to damage the locking tabs. Set the taillight aside. Repeat to remove the other side's taillight.



#### Step 6

Locate the yellow wire on the custom harness. Starting on the driver side, install the housing between the tail light and the vehicle harness. Route the harness down the driver's side of the vehicle. Locate a flat spot inside the vehicle, near the taillight. Adhere the black converter box using the provided double-sided tape.



### Step 7

Locate a grounding point such as an existing screw or bolt in the frame of the vehicle or drill a 3/32" pilot hole. The area should be free from rust, dirt, and paint (abrasive pad/paper to remove rust and paint). Secure the white ground wire with the ring terminal on the existing fastener or with the provided ground screw.

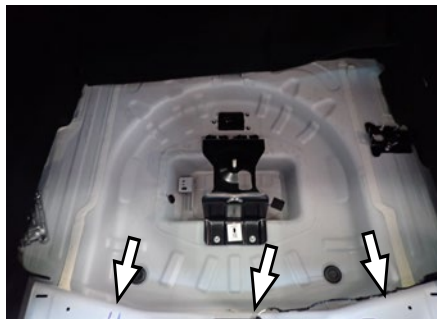
#### ⚠ CAUTION

Check for miscellaneous items that may be hidden behind or under any surface before drilling to avoid damage and/or personal injury



### Step 8

Route the green wire along the rear lower hatch to the passenger's side of the vehicle and up behind the trim panel to the passenger-side taillight. Install the green wire into the taillight housing and the vehicle wiring harness. Using the supplied cable ties, secure the green wire.



### Step 9

Route the black power wire from the vehicle battery as shown on the provided 'Powered Converter Lead Instruction Sheet'.

#### NOTICE

Once 12 volt power wire is connected to the harness verify that the harness is functioning by attaching the battery and testing with a test light, 4-flat tester, or a functioning trailer.

### Step 10

When in use, route the 4-flat to the center of the vehicle and out of the trunk, being careful not to catch the wires on the hatch locking mechanism. When not in use, roll up and store under the spare tire area. Secure any loose wires with the provided cable ties.



# POWERED CONVERTER LEAD INSTRUCTION SHEET

## FICHE DE CONSIGNES DU CONVERTISSEUR D'ALIMENTATION

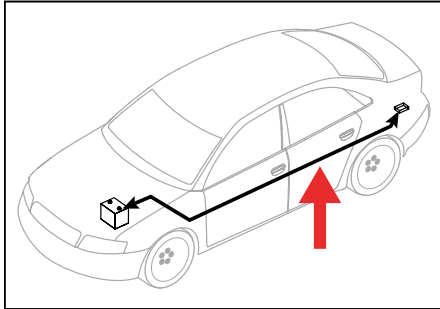
### HOJA DE INSTRUCCIONES DEL CONDUCTOR DEL ADAPTADOR ALIMENTADO POR BATERÍA

#### **NOTICE** AVIS / AVISO

Illustrations are for reference only. Battery location may differ depending on the vehicle.

Les images ne sont fournies qu'à des fins de référence. L'emplacement de la batterie peut varier en fonction du véhicule.

Las ilustraciones son solo para referencia. La ubicación de la batería puede variar según el vehículo.



#### **WARNING** AVERTISSEMENT / ADVERTENCIA

Route 12 GA wire to vehicle battery location, taking care to avoid any pinch points and hot or rotating components.

Acheminer le câble de calibre 12 à la batterie du véhicule en prenant soin d'éviter les points de pincement et les éléments chauds ou pivotants.

Pase el cable calibre 12 hacia la ubicación de la batería del vehículo, con cuidado de evitar atascos y componentes calientes o giratorios.

#### **WARNING** AVERTISSEMENT / ADVERTENCIA

To avoid personal injury or property damage, check for miscellaneous items that may be behind or under any surface before drilling.

Pour éviter les blessures et les dommages matériels, vérifier les divers articles qui peuvent se trouver derrière ou sous la surface avant de percer.

Para evitar lesiones personales o daños materiales, verifique que no haya ningún elemento detrás o debajo de la superficie antes de perforar.

#### **NOTICE** AVIS / AVISO

1. This converter system is to be used only on 12 volt negative ground systems.
2. Secure power wire to vehicle chassis using cable ties provided.
3. When passing the power wire through sheet metal, use an existing grommet, add a grommet or use silicone to protect the power wire from sharp edges.
4. Overall T-connector design may differ from illustration. The illustration should be used for power lead instruction only. Illustration is not to scale.

1. Ce système de convertisseur ne doit être utilisé qu'avec une prise de masse de polarité négative de 12 volts.
2. Fixer le câble d'alimentation au châssis du véhicule à l'aide des courroies d'attache de câble fournies.
3. Utiliser un œillet existant, ajouter un œillet ou appliquer du silicone pour protéger le câble d'alimentation des rebords tranchants au moment de le passer à travers la tôle.
4. La disposition générale du connecteur en T peut différer de l'illustration. Celle-ci ne doit être utilisée que pour le convertisseur d'alimentation. L'illustration n'est pas à l'échelle.

1. Este sistema de adaptadores solo se debe utilizar con sistemas con polo negativo a masa de 12 voltios.
2. Sujete el cable de alimentación al chasis del vehículo utilizando los sujetacables suministrados.
3. Al pasar el cable de alimentación por la lámina de metal, utilice la arandela pasacable existente, agregue una arandela pasacable o utilice silicona para proteger el cable de alimentación de los bordes filosos.
4. El diseño general del conector T puede ser distinto de la ilustración. La ilustración solo se debe utilizar para la instrucción del conductor de alimentación. La ilustración no está a escala.

