

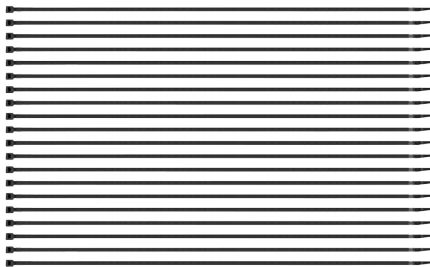
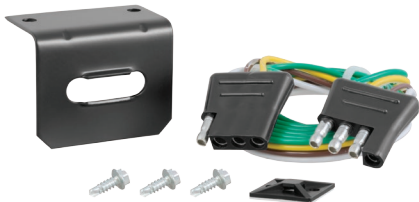
INSTALLATION INSTRUCTIONS

⚠ WARNING: DO NOT EXCEED PRODUCT RATING OR TOW VEHICLE LAMP LOAD RATING, WHICHEVER IS LOWER

APPLICATIONS

Make	Model
Ford	Edge SE
Ford	Edge SEL

TOWED-VEHICLE RV HARNESS



WIRING LOCATION GUIDE

SUVs, MINI & FULL-SIZED VANS (S)

Representative vehicle shown below

S1 - Behind driver side taillight housing

S2 - Behind passenger side taillight housing



NOTICE

All steps must be followed to ensure the towed-vehicle RV harness will function properly. Once installed, test for proper function by connecting a properly wired tow vehicle.

TOOLS NEEDED

- | | |
|-------------------|-------------------------|
| Ratchet | Drill |
| Ratchet extension | Phillips screwdriver |
| 7mm socket | Flat blade screwdriver |
| 10mm socket | Panel trim removal tool |
| T25 Torx bit | Cutting tool |
| 3/32" drill bit | Fish wire |

⚠ WARNING

Exceeding the product rating can cause loss of warranty, overheating and potential fire. Do not exceed product rating or tow vehicle lamp load rating, whichever is lower.

Signal Circuits - 6.0 amps per side

Tail / Running Circuits - 6.0 amps total

Check vehicle owner's manual or contact the vehicle manufacturer for more information.

INSTALLATION / SAFETY INSTRUCTIONS

Step 1

Open the trunk. Locate and remove the taillight fastener cover (A). Remove the taillight by removing the fastener securing it into place (B). Push straight back on the taillight taking care not to damage the alignment tabs on the back.

Step 2

On the back of the taillight, locate the vehicle taillight wiring harness connectors (C). The connectors will be similar to those on the RV wiring harness. Separate the connectors from the back of the taillight housing, taking care not to damage the locking tabs. Place taillight aside.

Step 3

Remove the fastener securing the taillight connector in place (D). Do not let the taillight connector fall behind the fascia. Pull back on the outer corner of the fascia and loosen the fasteners securing it in place to allow room for routing the RV wiring harness (E).

Step 4


Using fish wire (not included), route the RV wiring harness end with yellow wire behind the fascia to the taillight (F).

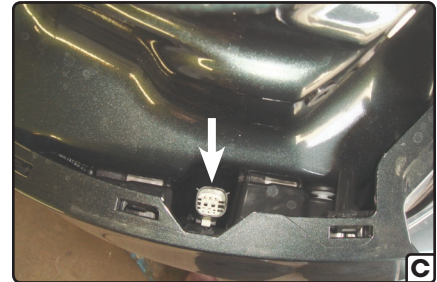
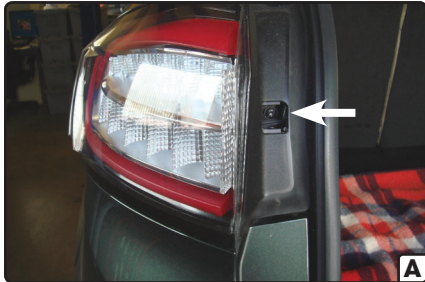
Step 5

Remove the white push fastener from the taillight connector and place it onto the RV wiring harness connector. Insert the RV wiring harness end with yellow wire between the separated connectors. Make sure the connectors are fully inserted with locking tabs in place (G). Reinstall the connector with the white push fastener (H).

Step 6

Locate a suitable grounding point near the connector such as an existing screw with nut in the vehicle frame or drill a 3/32" pilot hole for the provided screw. The area should be free of rust, dirt and paint. Secure the white ground wire using the ring terminal and provided screw.

 **WARNING:** Check for miscellaneous items that may be hidden behind or under any surface before drilling to avoid damage and / or personal injury.



INSTALLATION / SAFETY INSTRUCTIONS

Step 7

Locate a flat clean surface underneath the vehicle that is out of the path of spray and debris from the rear wheels and road. Adhere the black converter box using the provided double-sided tape. Failure to mount the box in a protected area can cause loss of warranty, product failure, overheating and potential fire.


Step 8

Underneath the vehicle, route the RV wiring harness end with the green wire along the bumper to the passenger side. Repeat steps 1-5 on the passenger side using the harness end with the green wire.

Step 9

Using fish wire, route the 4-flat over the passenger-side rear wheel well (H,I). Continue routing the 4-flat towards the front of the vehicle, securing the wire to the brake line brackets (J,K).

Note: Some cover trim panels may need to be removed to allow the routing of the 4-flat wiring from the back of the vehicle to the front of the vehicle.


 **WARNING:** Make sure to avoid areas that contain moving parts that could cut, pinch or burn wires when routing the 4-flat harness towards the front of the vehicle. Failure to follow these warnings may cause property damage and / or personal injury.

Step 10

Open the hood (L). From inside the engine compartment route fish wire down and over the top of the passenger-side wheel well. It may be necessary to remove additional clips and or screws from the wheel well cover. Secure the 4-flat to the fish wire at other side of passenger-side front wheel well and pull the 4-flat up into the engine compartment.

Step 11

Route the 4-flat to a flat, out of the way area within the engine compartment. Locate a suitable position to mount the 4-flat bracket. Using the bracket as a template, mark the two holes and drill two 3/32" holes.

 **WARNING:** Check for miscellaneous items that may be hidden behind or under any surface before drilling to avoid damage and / or personal injury. Take care not to drill through the body or any exposed surface.

Step 12

Attach the 4-flat bracket using two screws. Secure the 4-flat on the mounting bracket.

Step 13

Using the 4' RV extension harness, plug one end into the 4-flat mounted on the tow vehicle and the other end to the RV. Test all functions on the tow vehicle. These functions will only work on the brake / tail combination lamps on the towed vehicle.

4-Flat Harness Color Code:

White - Ground
Brown - Taillights
Green - Right Turn and Brake Signal
Yellow - Left Turn and Brake Signal

When the 4' RV extension harness is not in use, roll up and store in the glove compartment.

Step 14

Reinstall all items removed during install. Install the provided 4-flat dust cover to help prevent corrosion. Use cable ties as needed to secure any loose wires.

