

# INSTALLATION MANUAL

## Level of Difficulty

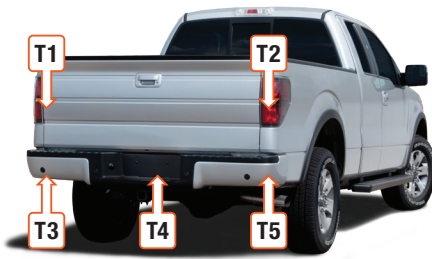
Easy

## Wiring Location(s)

T1 and T2

## Wiring Location Guide\* for Trucks (T)

T1	Behind driver side taillight housing
T2	Behind passenger side taillight housing
T3	Behind driver side rear bumper
T4	Behind center of rear bumper fascia
T5	Behind passenger side rear bumper



\* Representative vehicle shown

## Tools Required

Ratchet	Cutting tool
Socket extension	Electrical tape
Torx bit, T-20	Fish wire
Panel trim removal tool	--

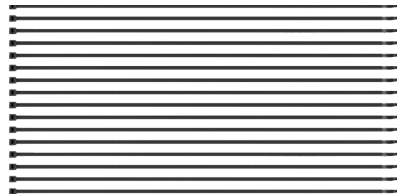
## ⚠ WARNING

Do not exceed product rating or tow vehicle lamp load rating, whichever is lower.

## Product Photo



## Hardware Photo



## NOTICE

Before you begin installation, read all instructions thoroughly.

Proper tools will improve the quality of installation and reduce the time required.

All steps must be followed to ensure the product will function properly. Once installed, test for proper function by using a test light or connecting a properly wired trailer.

## Maintenance

Periodic inspection of all wires and connections should be performed to ensure there is no visible damage or loose connections.

## Product Registration and Warranty

CURT Group stands behind our products with industry-leading warranties.

Provide feedback and help us to improve our products by registering your purchase at:

[warranty.curtgroup.com/surveys](http://warranty.curtgroup.com/surveys)

### Step 1

Locate the vehicle battery. Look up the battery location in the owner's manual of your vehicle. Disconnect the negative battery terminal. Be sure to fasten this wire down and away from the battery when completing the installation process.



### Step 2

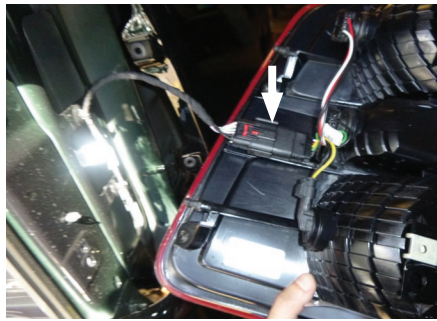
Open the tailgate. Use a panel trim removal tool to remove the four push fasteners and the four T-20 Torx bit screws, two per side, mounted near the taillight.

**Note:** Fasteners and screws are located in the sidewall covered by the tailgate when in the closed position.



### Step 3

Carefully remove the taillight straight back and out of the vehicle and locate the factory harness. The connectors will be similar to those on your new custom wiring product. Separate the connectors from the taillight housing taking care not to damage the locking tabs.



### Step 4A

Starting on the driver side, use a fish wire to route down into the inside of the box in the taillight opening.

Locate the housing end of the RV harness with yellow wire. Attach it to the fish wire, and pull through from the bottom of the vehicle into the taillight opening. Attach the housing to the driver-side vehicle factory harness, making sure the connector is fully inserted with the locking tabs in place.



### Step 4B - How to use fish wire

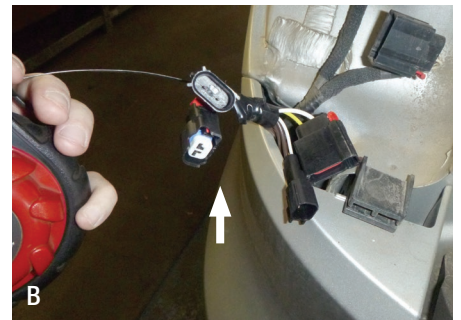
**A)** Fish wire is a way to push or pull an electrical wire through a blind hole. Make sure the wire is long enough to stick out on the other side.

Insert the fish wire through the blind hole and locate it on the other side.

**B)** Use tape to secure the harness to the fish wire and pull back up.

The fish wire or harness may get hung up on something, if this happens you may have to push back down, wiggle it around or twist the wire to loosen it from what it's hung up on.

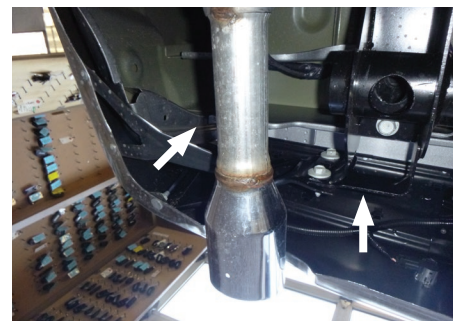
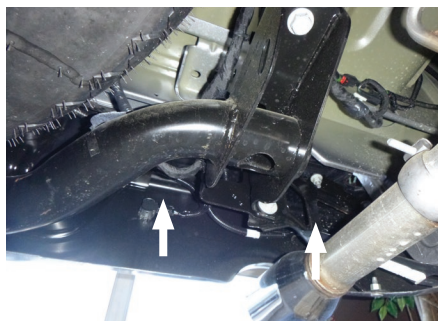
Fish wire could be anything from a cut-up wire hanger, stiff wire, rope or string depending on what is needed for the installation.



### Step 6

Route the housing end with green wire to the passenger side along the backside of the bumper of the vehicle.

Repeat step 5 on the passenger side of the vehicle with the green wire.



### Step 7

On the driver side, locate a grounding point near the box such as an existing screw or bolt in the frame of the vehicle or drill a 3/32" pilot hole. The area should be free from rust, dirt, and paint (abrasive pad/paper to remove rust and paint). Secure the white ground wire with the ring terminal on the existing fastener or with the provided ground screw.

#### **CAUTION**

Check for miscellaneous items that may be hidden behind or under any surface before drilling to avoid damage and/or personal injury

### Step 8

Attach the taillight to the respective side harness and reinstall.

#### **NOTICE**

Once the custom wiring harness is installed, verify that the harness is functioning by attaching the 4-flat to any vehicle with functioning trailer lights. The taillights on the tow vehicle should function along with the taillights on the towing vehicle.

Reinstall the taillight fasteners

### Step 9

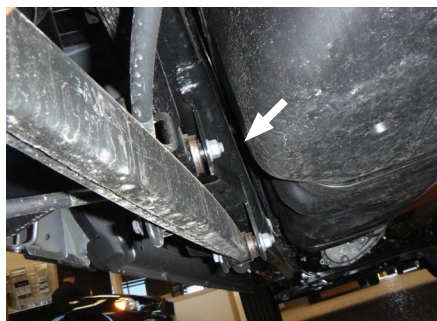
Route the 4-flat along the frame rail on the driver side. Zip tie as needed along the frame rail to keep the 4-flat away from hot spots, pinch points or moving objects.

Loosely secure the zip ties.



### Step 10

Route in between the frame and the fuel tank to the front of the vehicle and up to the rear of the front tire.

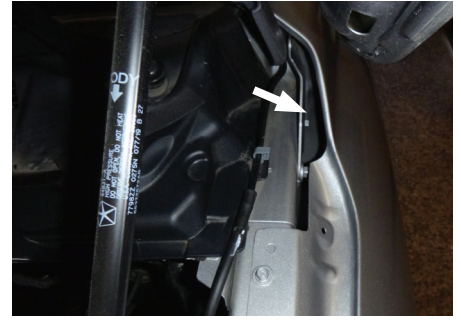


### Step 11

Once you reach the rear of the front tire, route the 4-flat between the body and the frame.

From under the hood, use fish wire to pull the harness up between the inner and outer fender to the top of the engine compartment.

Refer to step 4B on how to use fish wire.



### Step 12

Route the 4-flat harness along the driver-side inner fender to the front of the truck. Mount the 4-flat to the inner fender between the fuse panel and the head light.



### Step 13

Use a panel trim removal tool to remove the trim cover. Route the 4-flat wire along the driver-side inner fender under the removed cover. Zip tie as needed to the front of the vehicle. Route to just behind the passenger-side head light and mount to the inner fender.

Secure any excess wire so that it is not drooping or dangling, but not so tight that it causes unnecessary strain to the wire which could lead to breakage over time. After removing slack from the 4-flat wire, tighten any zip ties and add as needed. Use a zip tie to fasten any excess wire to a solid spot along the driver-side inner fender.

Reinstall all items removed during install. If it was disconnected at the beginning of the installation, reconnect the negative battery terminal. Install the provided 4-flat dust cover to help prevent corrosion.