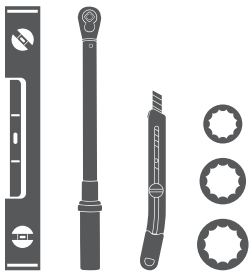


Parts List

1	Driver / left side bar
1	Passenger / right side bar
2	Mounting bracket, front
2	Mounting bracket, rear
8	Hex bolt, 8mm
8	Flat washer, 8mm
8	Lock washer, 8mm
12	Hex bolt, 10mm
12	Flat washer, 10mm
12	Lock washer, 10mm
4	Bolt, 12mm & nut plate, 10mm
4	Flat washer, 12mm
4	Lock washer, 12mm
4	Hex nut, 12mm
4	Plastic retainer, 12mm

Tools Required

Torque wrench	Socket, 13mm
Utility knife	Socket, 16mm
Level	Socket, 18mm



Level of Difficulty

Easy



Scan for helpful install tips

Product Image



Brackets



Notes and Maintenance

Before you begin installation, read all instructions thoroughly.

Proper tools will improve the quality of installation and reduce the time required.

To protect the product, wax after installing. Regular waxing is recommended to add a protective layer over the finish. Do not use any type of polish or wax that may contain abrasives that could damage the finish.

For stainless steel and aluminum, polish may be used to clear small scratches and scuffs on the finish. Mild soap may be used also to clean the product.

Step 1

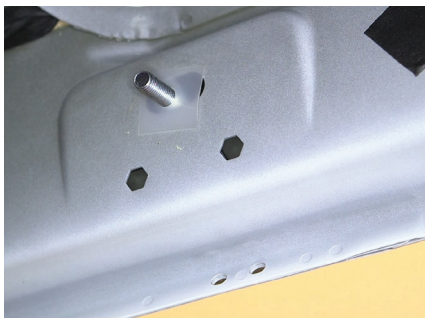
Starting on the passenger side, locate the two mounting locations underneath the vehicle.



Step 2

Locate the passenger-side front mounting point. Using a utility knife, cut and remove the tape covering the mounting point for the front mounting bracket.

Insert a 12mm bolt / 10mm nut plate into the opening. Slide a plastic bolt retainer over the thread of the bolt to hold the bolt in place.



Step 3

Place the front driver-side bracket onto the vehicle and secure the top portion with a 12mm lock washer, flat washer and hex nut.

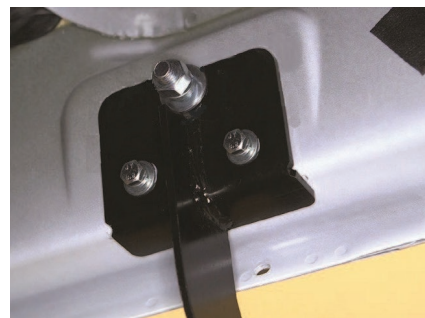
Snug the hardware, but do not fully tighten.



Step 4

Finish securing the front mounting bracket to the vehicle by inserting two 8mm hex bolts, lock washers and flat washers into the bottom holes of the mounting brackets.

Note: On vehicles not equipped with 8mm threaded inserts, align the 10mm nut on the 12mm bolt plate with either hole location on the bracket. Secure using a 10mm hex bolt, lock washer and flat washer.



Step 5

Locate the rear mounting point and repeat steps 3 and 4 to secure the rear mounting bracket to the vehicle.



Step 6

Place the side bar onto the mounting brackets and align the mounting points. Ensure the rivet nuts on the bottom of the side bar line up with the brackets.

Secure the side bar to the brackets using a 10mm hex bolt, lock washer and flat washer at each mounting location.

Snug the hardware, but do not fully tighten.



Step 7

Adjust and level the side bar.

With the side bar in position, it is recommended to tighten all brackets to the vehicle first, followed by the side bar connections.



Step 8

Repeat steps 1 through 7 on the driver side of the vehicle.

Congratulations on the installation of your new ARIES 4" oval side bars.

With the side bars installed, periodic inspections should be performed to ensure all mounting hardware remains tight.

To protect your investment, see the 'Notes and Maintenance' section on the first page of this instruction manual.

